

ABOUT THE PRODUCT

The **EPU-Series** embossed doors are designed to provide security and durability for today's demanding residential and commercial markets. The foam-in-place **Polyurethane** core provides total surface support and an exceptionally flat surface, high impact resistance and outstanding thermal resistance. It provides a high level of compression and shear strength, which is further enhanced by bonding with facing materials. It offers the lowest "U" value and the highest R-Factor (a measure of insulating performance / thermal resistance, and measure of ability to retard heat flow) of all the cores.

As described by HMMA / NAAMM – USA (National Association of Architectural Metal Manufacturers-United States of America):

"Urethane core doors possess superior insulating properties (R- factor of 11.1) and are suitable for exterior openings in cold climates".

The EPU-Series embossed doors will provide you with THE BEAUTY OF WOOD...BUT DURABILITY OF STEEL!

FEATURES

CORE:

- ▶ Foam-In-Place polyurethane thermal insulation core, having a thickness of 43 mm and a nominal density of 47 Kg/m³ (DIN 53420).
- ▶ Thermal Conductance (43 mm): $U = 0.078 \text{ Btu/hr.ft}^2.\text{°F}$. (ASTM C177).
- ▶ Thermal Resistance: R-Factor = 12.80 hr.ft².°F/Btu. (ASTM C518-63T).
- ▶ Polyurethane is a thermo-setting material, which when subjected to heat, merely slowly chars without melting or producing flaming droplets (BRUFMA/ID/2/2001).

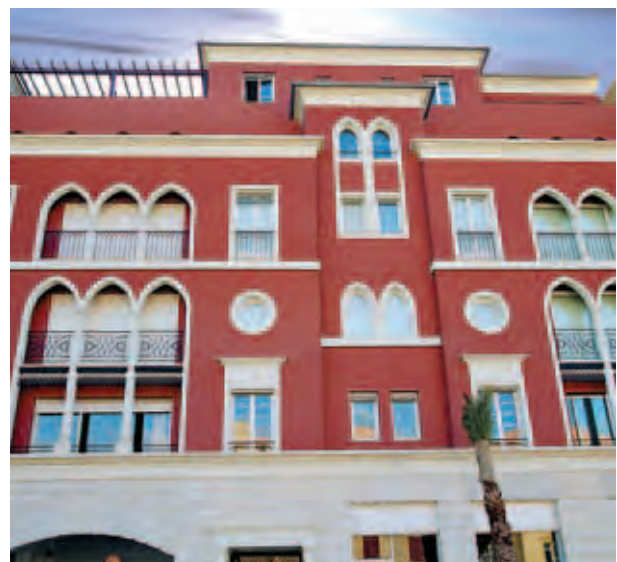
OPTIONS:

- ▶ Seamless design.
- ▶ Available in wood grain texture or plain stamped.
- ▶ Beveled or flush welded glass beads.
- ▶ Alkyd, polyurethane or epoxy RAL paint finish (factory applied).
- ▶ vision panels, transoms and sidelights.



SPECIFICATIONS OF COMPLIANCE

- ▶ Construction of the EPU doors meets the requirements of ANSI A250.8-2003 (SDI 100) and ANSI 151.1.
- ▶ Fire Rating: Up to 3 hrs for single leaf and double leaf swing doors, listed and labeled by Intertek-Warnock Hersey according to UL 10C, UL 10B, UBC 7-2-1994/1997, NFPA 252-1995, ASTM E152-81a, and CAN4-S104 (ULC S104).



LEAF CONSTRUCTION

- ▶ 45 mm (1 3/4") thick full construction fabricated from 1.0 mm (GA 20) thick galvanized steel sheets (ASTM A653-A526).
- ▶ Rich wood grain pattern engraved into a stainable steel surface.
- ▶ 1.5 mm (GA 16) thick steel top and bottom channels welded to both face sheets for lasting integrity.
- ▶ Mechanically interlocked, hemmed vertical edge seams for added strength and rigidity.
- ▶ Hardware reinforcing in accordance to ANSI, SDI, NFPA standards requirements.
- ▶ 5.0 mm steel hinge reinforcement.
- ▶ Factory applied epoxy prime base coat.
- ▶ Back cover can be flush steel sheet or embossed steel sheet, however Fire rated Embossed Steel Doors must have embossed back cover.
- ▶ Available in nominal sizes up to 4'0 x 8'0 single and 8'0 x 8'0 double leaf.



DOOR TYPES

- ▶ The EPU-Series doors are available with a wide range of glass light openings. For fire rating limitations, please refer to the "Product Range Certifications" pages 11 to 15.



F

N

NN

HG